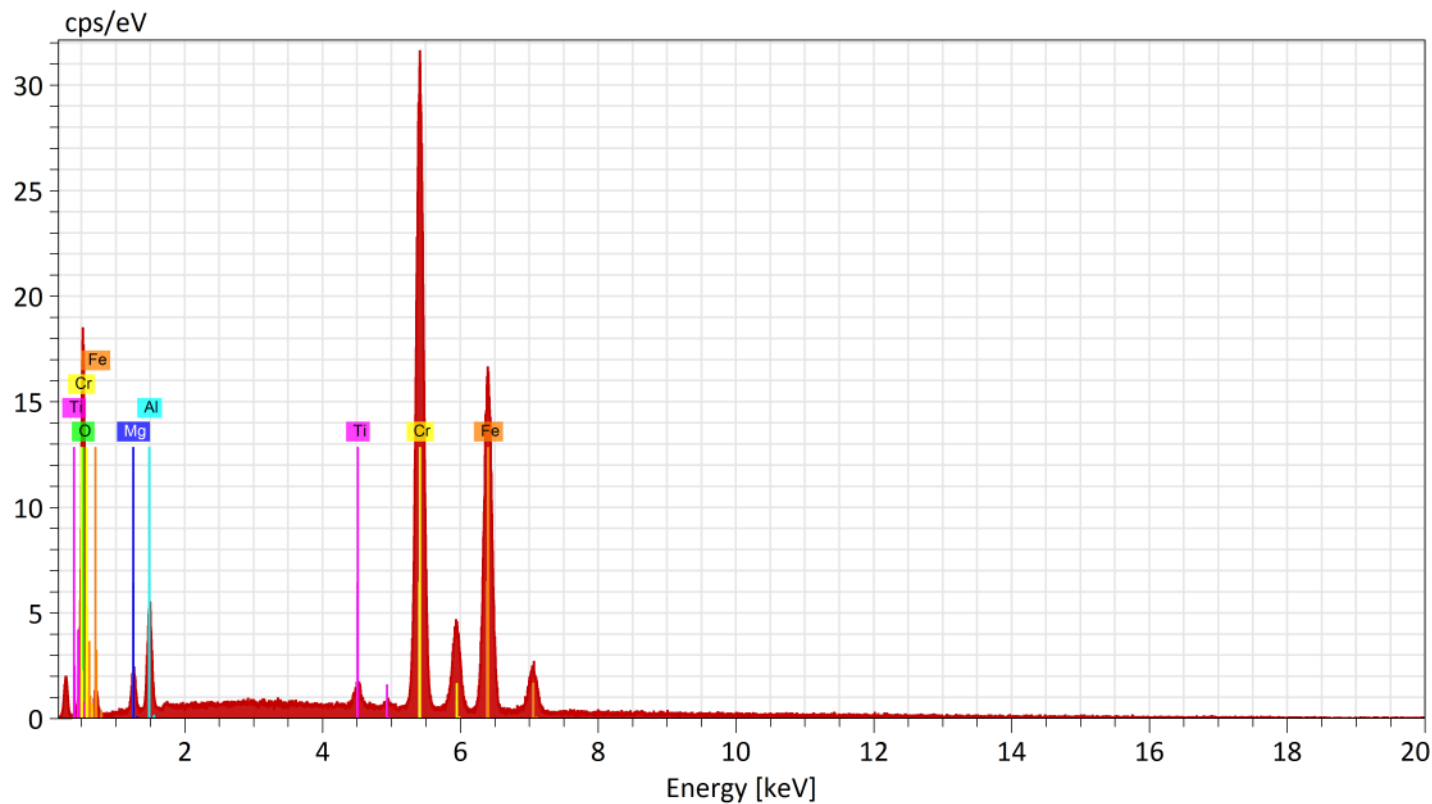


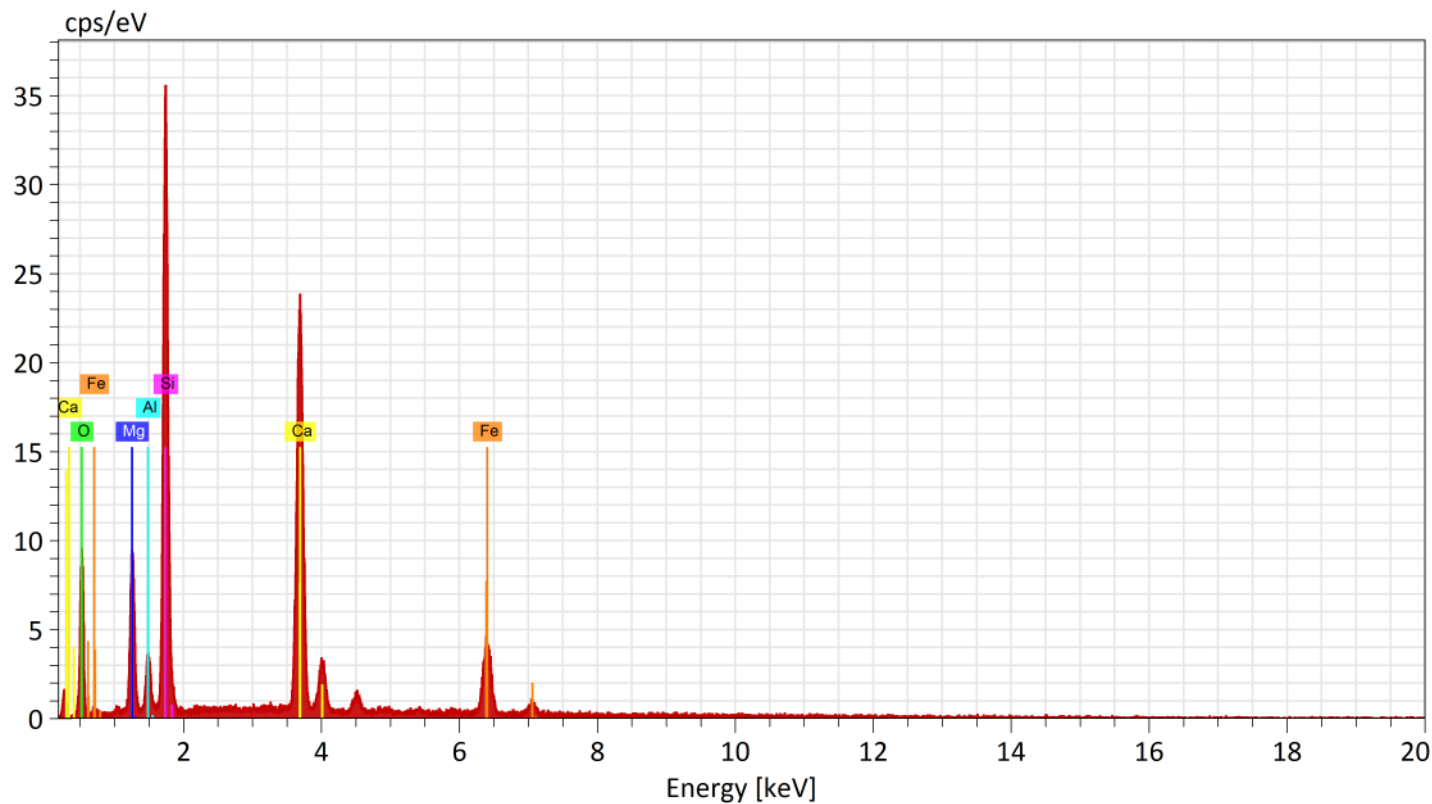
SEM-EDS Lab, Palaeontology Division, Geological Survey Of India(SR)  
Hyderabad



Normalized stoichiometric concentration [%]

Spectrum	Oxygen	MgO	Al <sub>2</sub> O <sub>3</sub>	TiO <sub>2</sub>	Cr <sub>2</sub> O <sub>3</sub>	FeO
CMT/011/640.00	3.81	8.99	1.50	48.96	36.74	

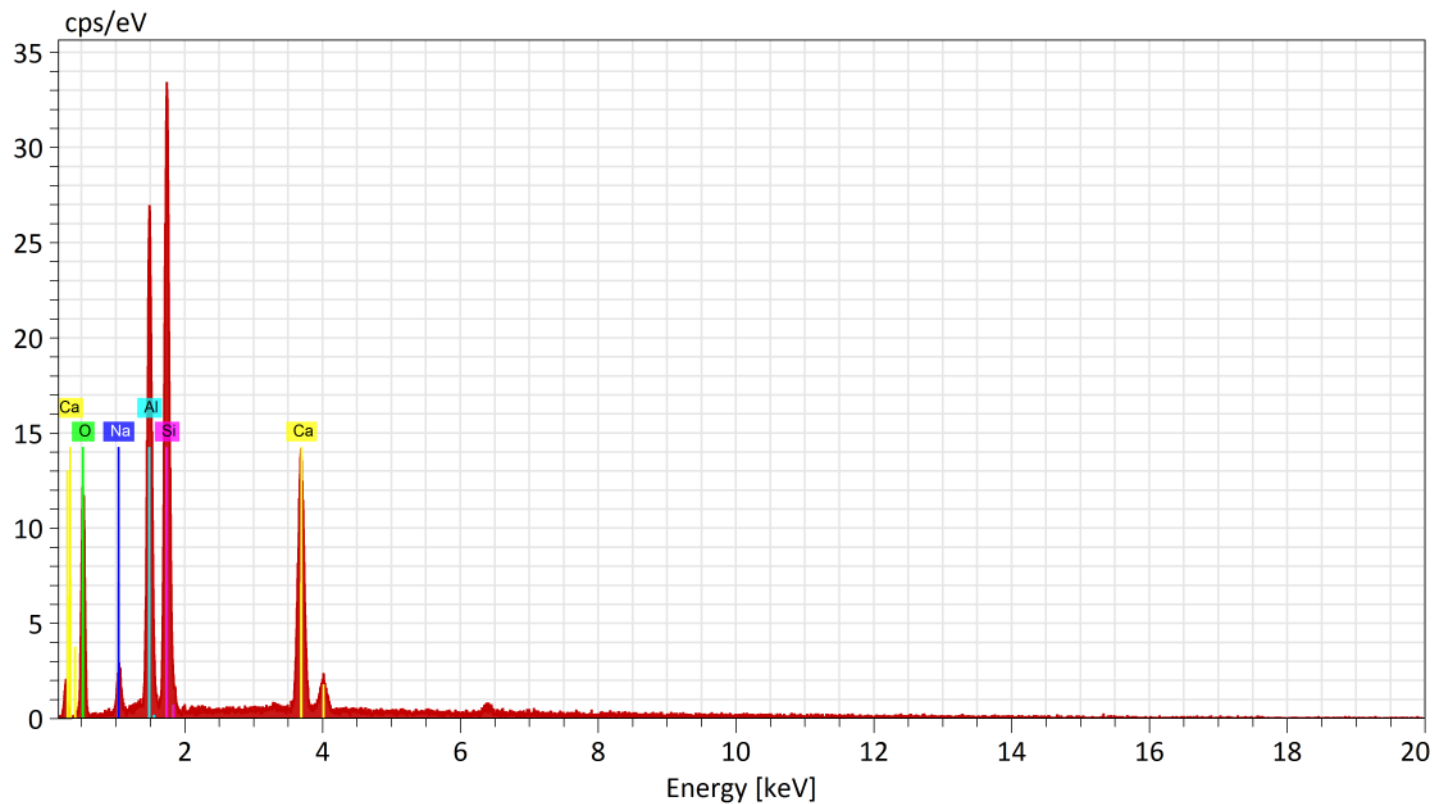
**SEM-EDS Lab, Palaeontology Division, Geological Survey Of India(SR)**  
**Hyderabad**



Normalized stoichiometric concentration [%]

Spectrum	Oxygen	MgO	Al <sub>2</sub> O <sub>3</sub>	SiO <sub>2</sub>	CaO	FeO
CMT/011/640.00		13.48	5.04	50.36	24.11	7.01

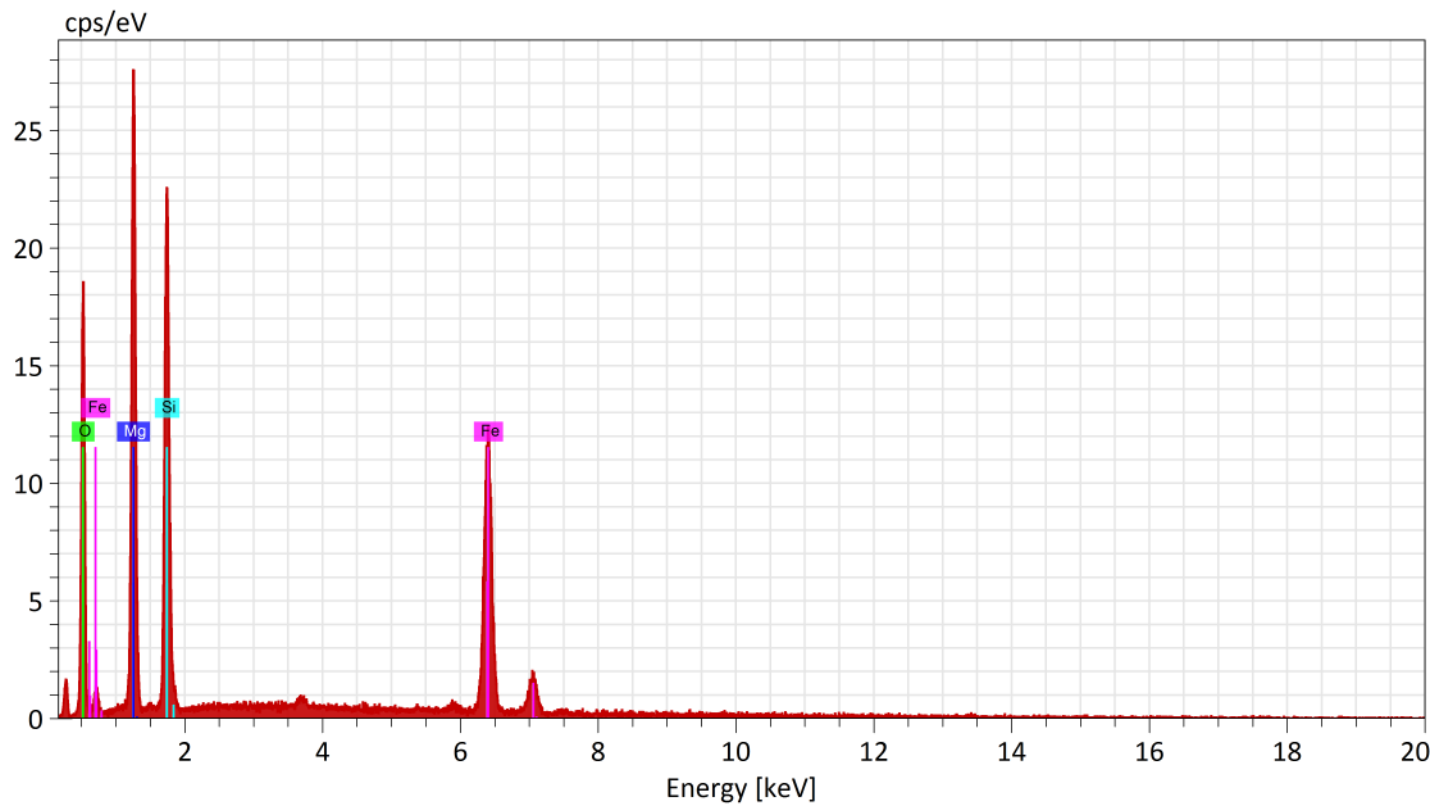
**SEM-EDS Lab, Palaeontology Division, Geological Survey Of India(SR)**  
**Hyderabad**



Normalized stoichiometric concentration [%]

Spectrum	Oxygen	Na <sub>2</sub> O	Al <sub>2</sub> O <sub>3</sub>	SiO <sub>2</sub>	CaO
CMT/011/640.00	4.34	27.69	51.72	16.26	

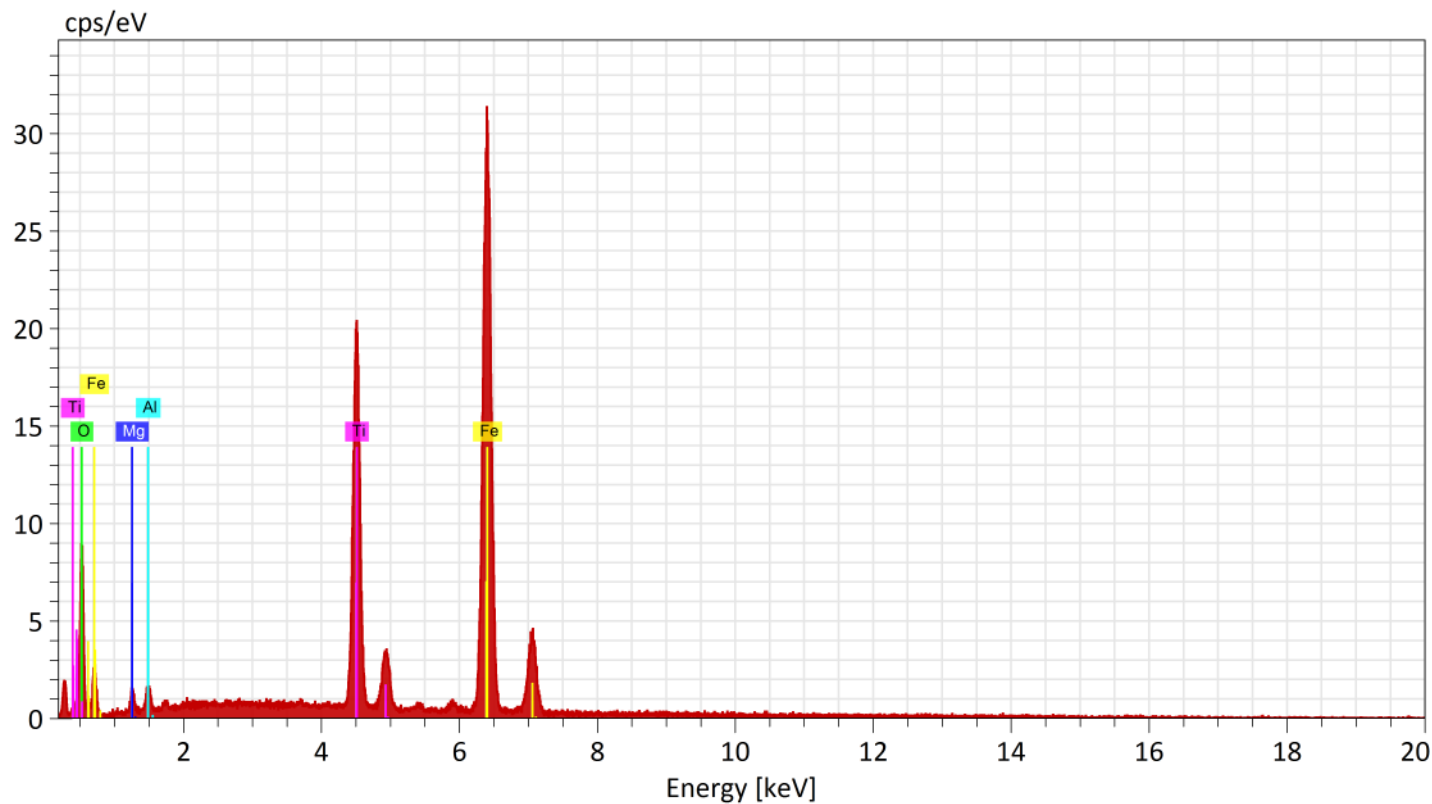
**SEM-EDS Lab, Palaeontology Division, Geological Survey Of India(SR)**  
**Hyderabad**



Normalized stoichiometric concentration [%]

Spectrum	Oxygen	MgO	SiO2	FeO
CMT/011/640.00	33.40	41.87	24.72	

SEM-EDS Lab, Palaeontology Division, Geological Survey Of India(SR)  
Hyderabad



Normalized stoichiometric concentration [%]

Spectrum	Oxygen	MgO	Al <sub>2</sub> O <sub>3</sub>	TiO <sub>2</sub>	FeO
CMT/011/640.00	2.41	2.40	31.41	63.78	